



BEFORE



The Sixties house looked like an old bungalow

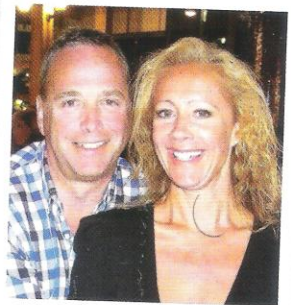


Replacing the pitched roof with a flat version and adding glazing has given the house a contemporary look and better views

EXTREME TRANSFORMATION 2

# ‘We replaced our roof and built upwards’

Derek and Louise Middlemas swapped a pitched roof for a flat design to create more space for a loft bedroom



## Trials & triumphs...

### ■ What was the high point of the project?

‘It was when we could see the frame of the new structure taking shape. We stood on our new balcony and realised what a wonderful view we were going to have.’

### ■ Any low points?

‘While the house had no roof, there were two days of torrential rain and water penetrated right through the building.’

### ■ Who or what was the project saviour?

‘Nigel Lewis of Space & Style Home Design gave us the extra space and wow factor we wanted. We’re very glad we decided to replace the pitched roof with a flat design and create a modern-looking home.’

A love of sailing led Derek and Louise Middlemas to buy a Sixties house in need of renovation on the Isle of Wight. ‘We wanted to be close to the Solent and Louise has family on the island,’ says Derek. The house appeared to be one-storey from the front, but is positioned on a hillside, so it had a hidden lower-ground floor level at the rear. ‘Nothing had been done to the house for many years and it needed rewiring,’ says Louise. ‘We wanted a more modern, open-plan layout, so we tackled the upgrade in two stages.’

**FRESH UPDATES** First of all, the couple concentrated on modernising the property, and moved into temporary accommodation while their home was gutted, redecorated and re-landscaped. Louise and Derek’s long-term plan, however, was to build a main bedroom in the loft to take full advantage of the property’s sea views.

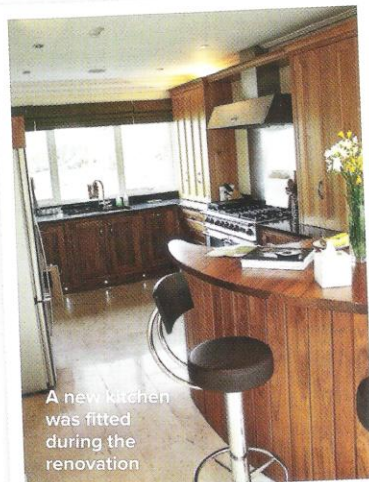
‘We had several attempts at working with local architects, but creating enough space in the roof with a conventional dormer proved difficult and resulted in restricted head height,’ says Derek. Louise

did an internet search and discovered Hampshire-based architectural practice Space & Style Home Design (023 9252 5100; spaceandstyle.co.uk).

Designer Nigel Lewis visited the couple’s home and came up with an idea that incorporated flat roofs. ‘It effectively gave us a whole new floor without affecting our neighbours’ views,’ says Louise. The island’s planning authority initially refused the design on the grounds it would be ‘out of character’, however, the couple found several similar examples on the island and won an appeal.

**ANOTHER LEVEL** Work on the first floor began in June 2011 and the couple had to move into temporary accommodation once again, as the entire roof of the house needed to be removed. Strengthening work was also undertaken on the lower floors.

The couple paid £419,000 for the four-bedroom house in 2006 and spent around £220,000 in total across both phases of renovation work. The property is now worth around £720,000 and is virtually unrecognisable from its original form. ‘Watching liners on the Solent from our new balcony is something special,’ says Louise.



A new kitchen was fitted during the renovation